

Certificate of Analysis

pGL4.22[*luc2CP*/Puro] Vector:

Part No. Size
E677A 20µg

Part# 9PIE677
Revised 9/16



Instructions for use of this product can be found in the pGL4 Vectors Technical Manual #TM259, available online at: www.promega.com/protocols

Description: The pGL4.22[*luc2CP*/Puro] Vector^(a-d) encodes the luciferase reporter gene *luc2CP* (*Photinus pyralis*) and is designed for high expression and reduced anomalous transcription. This vector also contains a mammalian selectable marker for puromycin resistance in which the number of transcription factor binding sites has been reduced and mammalian codon usage optimized. This vector is also engineered with fewer consensus regulatory sequences for reduced background and a decreased risk of anomalous transcription and has a synthetic reporter gene, which has been codon optimized for mammalian expression.

The pGL4.22[*luc2CP*/Puro] Vector is a basic vector with no promoter. However, it contains a multiple cloning region that allows cloning of a promoter of choice. The *luc2CP* reporter gene contains two protein destabilization sequences, hCL1 and hPEST. The protein encoded by *luc2CP* responds more quickly and with greater magnitude to changes in transcriptional activity than the *luc2* gene, its more stable counterpart.

Concentration: 1µg/µl.

GenBank® Accession Number: DQ188842.

Storage Buffer: The pGL4.22[*luc2CP*/Puro] Vector is supplied in 10mM Tris-HCl (pH 7.4), 1mM EDTA.

Storage Conditions: See the product information label for storage temperature recommendations and expiration date. Avoid multiple freeze-thaw cycles and exposure to frequent temperature changes. These fluctuations can greatly alter product stability.

Usage Notes:

1. For easy transfer from one pGL4 Vector to another, the multiple cloning region is consistent throughout the pGL4 Vector series. For easy transfer between pGL3 Vectors and pGL4 Vectors, many of the restriction enzyme sites present in the pGL3 Vectors are also present in the pGL4 Vectors.
2. Concentration gradients may form in frozen products and should be dispersed upon thawing. Mix well prior to use.



AF9PIE677 0916E677



Promega

Promega Corporation

2800 Woods Hollow Road	
Madison, WI 53711-5399	USA
Telephone	608-274-4330
Toll Free	800-356-9526
Fax	608-277-2516
Internet	www.promega.com

Quality Control Assays

Nuclease Assay: Following incubation of 1µg of pGL4.22[*luc2CP*/Puro] Vector in standard restriction digest buffers at 37°C for 16–24 hours, no evidence of nuclease activity is detected by agarose gel electrophoresis.

Physical Purity: $A_{260}/A_{280} \geq 1.80$, $A_{260}/A_{250} \geq 1.05$ at pH 7.4.

Sequence: The pGL4.22[*luc2CP*/Puro] Vector has been completely sequenced by single-strand sequencing and has 100% identity with the published sequence, available at: www.promega.com/vectors

Signed by:

R. Wheeler, Quality Assurance

PRODUCT USE LIMITATIONS, WARRANTY, DISCLAIMER

Promega manufactures products for a number of intended uses. Please refer to the product label for the intended use statements for specific products. Promega products contain chemicals which may be harmful if misused. Due care should be exercised with all Promega products to prevent direct human contact.

Each Promega product is shipped with documentation stating specifications and other technical information. Promega products are warranted to meet or exceed the stated specifications. Promega's sole obligation and the customer's sole remedy is limited to replacement of products free of charge in the event products fail to perform as warranted. Promega makes no other warranty of any kind whatsoever, and SPECIFICALLY DISCLAIMS AND EXCLUDES ALL OTHER WARRANTIES OF ANY KIND OR NATURE WHATSOEVER, DIRECTLY OR INDIRECTLY, EXPRESS OR IMPLIED, INCLUDING, WITHOUT LIMITATION, AS TO THE SUITABILITY, PRODUCTIVITY, DURABILITY, FITNESS FOR A PARTICULAR PURPOSE OR USE, MERCHANTABILITY, CONDITION, OR ANY OTHER MATTER WITH RESPECT TO PROMEGA PRODUCTS. In no event shall Promega be liable for claims for any other damages, whether direct, incidental, foreseeable, consequential, or special (including but not limited to loss of use, revenue or profit), whether based upon warranty, contract, tort (including negligence) or strict liability arising in connection with the sale or the failure of Promega products to perform in accordance with the stated specifications.

© 2005–2013, 2015, 2016 Promega Corporation. All Rights Reserved.

GenBank is a registered trademark of US Department of Health and Human Services.

Products may be covered by pending or issued patents or may have certain limitations. Please visit our Web site for more information.

All specifications are subject to change without prior notice.

Product claims are subject to change. Please contact Promega Technical Services or access the Promega online catalog for the most up-to-date information on Promega products.

^(a)BY USE OF THIS PRODUCT, RESEARCHER AGREES TO BE BOUND BY THE TERMS OF THIS LIMITED USE LABEL LICENSE.

If the researcher is not willing to accept the terms of this label license, and the product is unused, Promega will accept return of the unused product and provide the researcher with a full refund.

Researchers may use this product for research use only, no commercial use is allowed. "Commercial use" means any and all uses of this product and derivatives by a party for money or other consideration and may include but is not limited to use in: (1) product manufacture; and (2) to provide a service, information or data; and/or resale of the product or its derivatives, whether or not such product or derivatives are resold for use in research. Researchers shall have no right to modify or otherwise create variations of the nucleotide sequence of the luciferase gene except that researchers may: (1) create fused gene sequences provided that the coding sequence of the resulting luciferase gene has no more than four deoxynucleotides missing at the affected terminus compared to the intact luciferase gene sequence, and (2) insert and remove nucleic acid sequences in splicing research predicated on the inactivation or reconstitution of the luminescence of the encoded luciferase. No other use or transfer of this product or derivatives is authorized without the prior express written consent of Promega. In addition, researchers must either: (1) use luminescent assay reagents purchased from Promega for all determinations of luminescence activity of this product and its derivatives; or (2) contact Promega to obtain a license for use of the product and its derivatives. Researchers may transfer derivatives to others for research use provided that at the time of transfer a copy of this label license is given to the recipients and recipients agree to be bound by the terms of this label license. With respect to any uses outside this label license, including any diagnostic, therapeutic or prophylactic uses, please contact Promega for supply and licensing information. PROMEGA MAKES NO REPRESENTATIONS OR WARRANTIES OF ANY KIND, EITHER EXPRESSED OR IMPLIED, INCLUDING FOR MERCHANTABILITY OR FITNESS FOR A PARTICULAR PURPOSE WITH REGARDS TO THE PRODUCT. The terms of this label license shall be governed under the laws of the State of Wisconsin, USA. This label license relates to Promega patents and/or patent applications on improvements to the luciferase gene.

^(b)Patent Pending.

^(c)U.S. Pat. No. 8,008,006 and European Pat. No. 1341808.

^(d)U.S. Pat. No. 7,728,118.

Part# 9PIE677
Printed in USA. Revised 9/16

pGL4.22[*luc2CP*/Puro] Vector Features List and Maps

Multiple cloning region	1-70
<i>luc2CP</i> reporter gene	100-1929
SV40 late poly(A) signal	1966-2187
SV40 early enhancer/promoter	2235-2653
Synthetic puromycin-N-acetyltransferase (Puro ^r) coding region	2678-3277
Synthetic poly(A) signal	3302-3350
Reporter Vector primer 4 (RVprimer4) binding region	3417-3436
<i>Co</i> /E1-derived plasmid replication origin	3674
Synthetic β-lactamase (Amp ^r) coding region	4465-5325
Synthetic poly(A) signal/transcriptional pause site	5430-5583
Reporter Vector primer 3 (RVprimer3) binding region	5532-5551

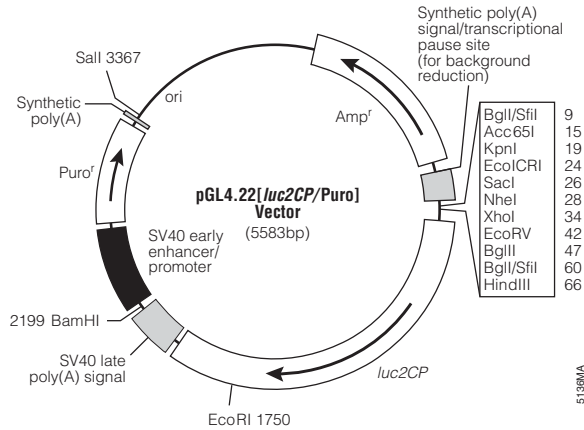


Figure 1. pGL4.22[*luc2CP*/Puro] Vector map.

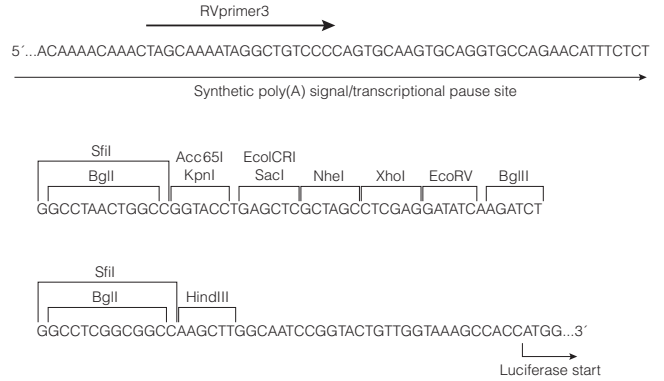


Figure 2. Multiple cloning region of the pGL4.22[*luc2CP*/Puro] Vector.

Sequence information, vector maps and restriction enzyme tables for the pGL4 Vectors are available online at: www.promega.com/vectors
 Further information on the use of pGL4 Vectors is available in Technical Manual #TM259, available online at: www.promega.com/protocols